



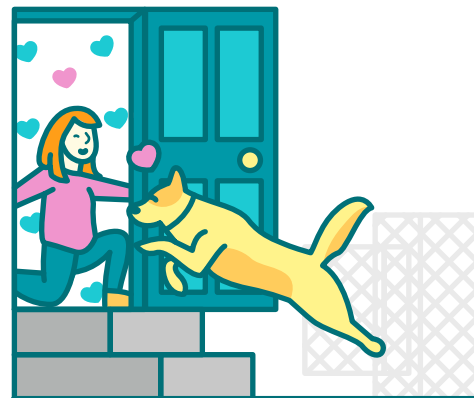
# 7

# Seven Guiding Principles for Foster Programs

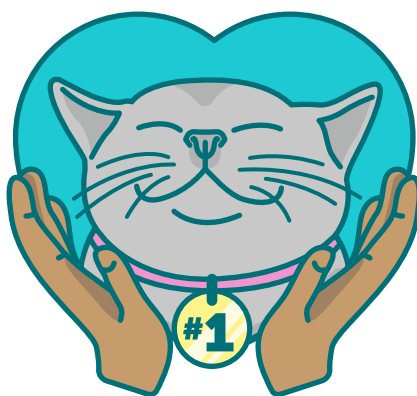
**1** Foster care is a humane, cost-effective and safe alternative to the confinement and stress of kennel housing.



**2** Foster care is a preferable alternative to in-shelter care for the vast majority of pets.



**3** Each pet is treated as an individual with its own unique set of physical and emotional needs.



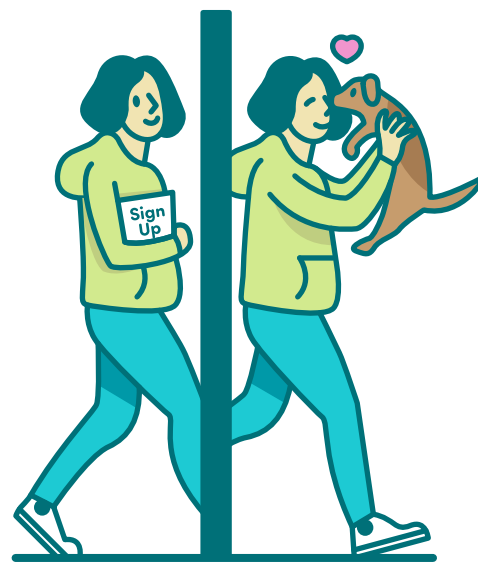
**4** Foster care is a priority function of the organization.



**5** Foster caregivers are celebrated and given tools they need to be successful.



**6** Fostering a pet is simple, easy and accessible.



**7** Shelter/Rescue leadership sets measurable goals for the foster program and tracks data associated with those goals.

